

---

# ASID NE DESIGN EXCELLENCE AWARDS

**Thursday, November 13, 2025 | 6:00 PM–8:00 PM**

**BluDot, 141 Seaport Blvd., Boston, MA 02210**

---

AMERICAN  
SOCIETY OF  
INTERIOR  
DESIGNERS  
NEW ENGLAND



**Presenting...**

---

**Commercial  
Hospitality Design**



# Shannon Wood – The Asher

Commercial Hospitality Design



**Presenting...**

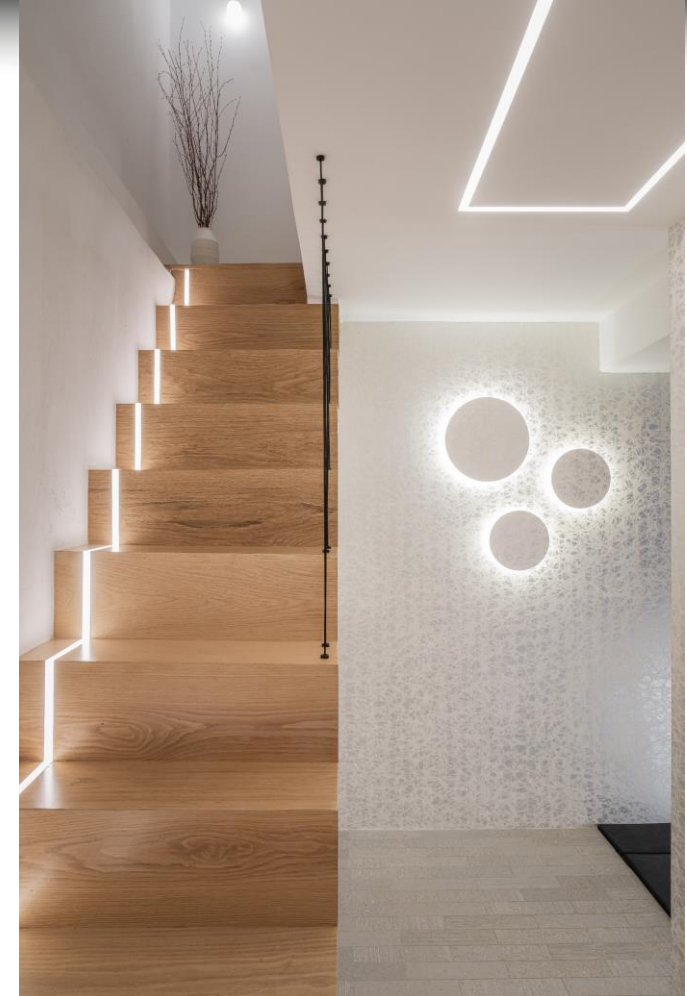
---

# **Lighting Design**



# Trevor Fulmer - Home Health Haven

Lighting Design



**Presenting...**

---

# **Residential Bathroom Design**



# Jeanne Finnerty – A Queen's Gambit

Residential Bathroom design



**Presenting...**

---

**Residential Project  
Over 3500 Sq Ft.**



# Dane Austin - Woodland Retreat

Residential Project over 3500 sq ft



BEFORE





# Dane Austin - Woodland Retreat (cont.)

Residential Project over 3500 sq ft



**Presenting...**

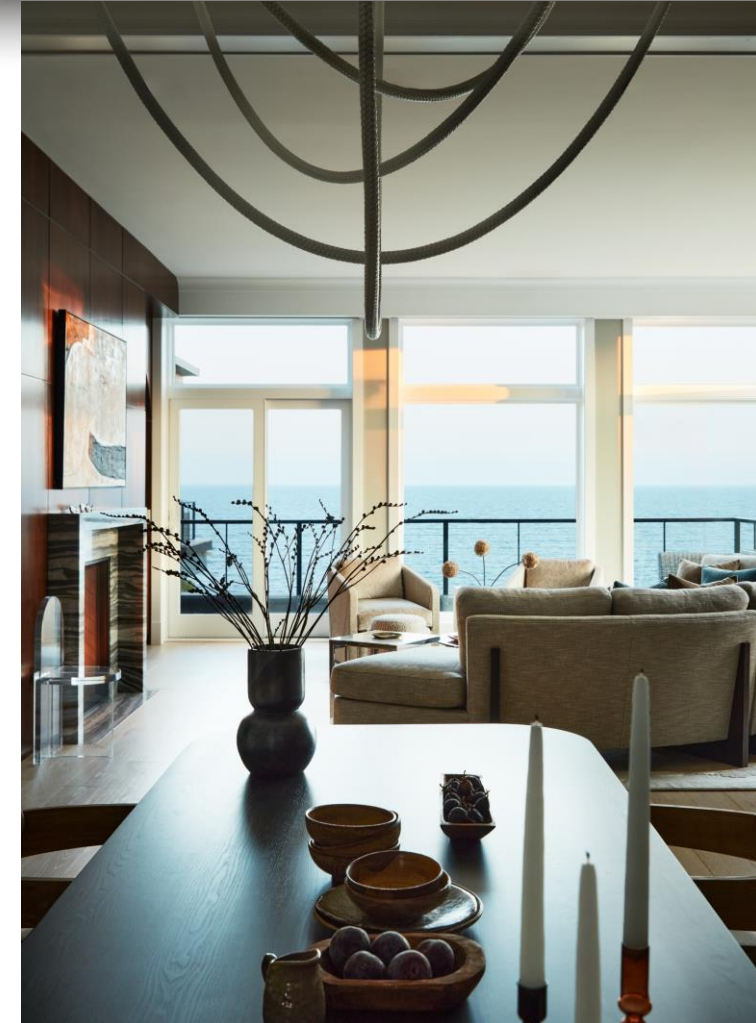
---

**Residential Project  
Under 3500 Sq Ft.**



# Trevor Fulmer - Nautical Noir

Residential Project under 3500 sq ft



Presenting...

---

**Student & Emerging  
Professional -  
Commercial**



# Alec Taylor - The Chicago Tempo

Student & emerging professional commercial  
*University of Massachusetts Dartmouth*





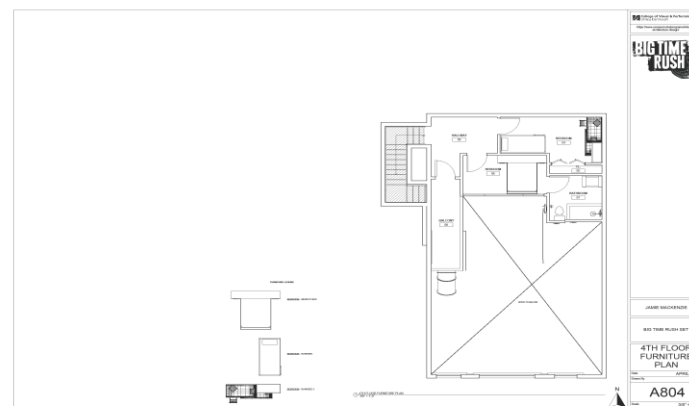
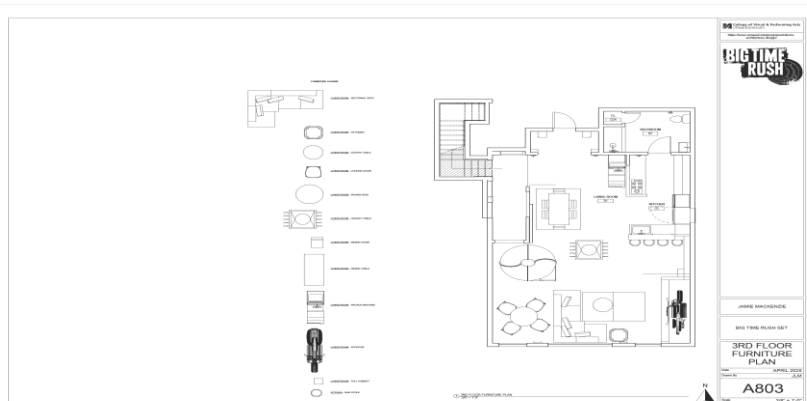
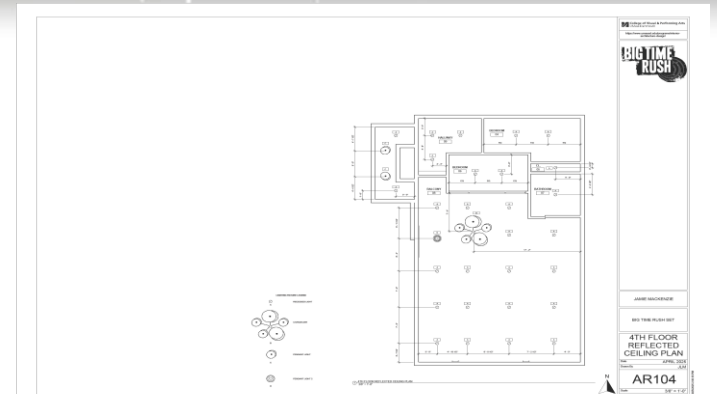
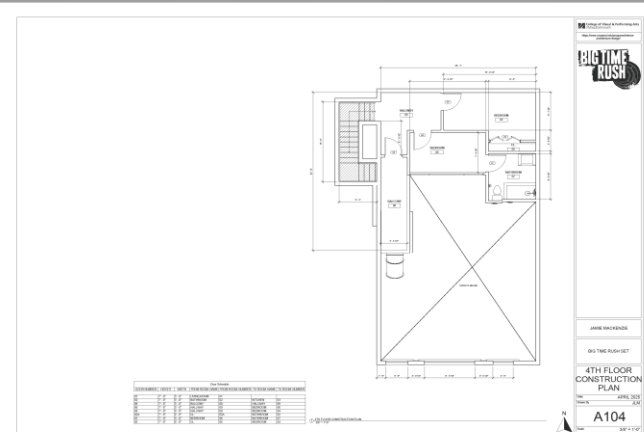
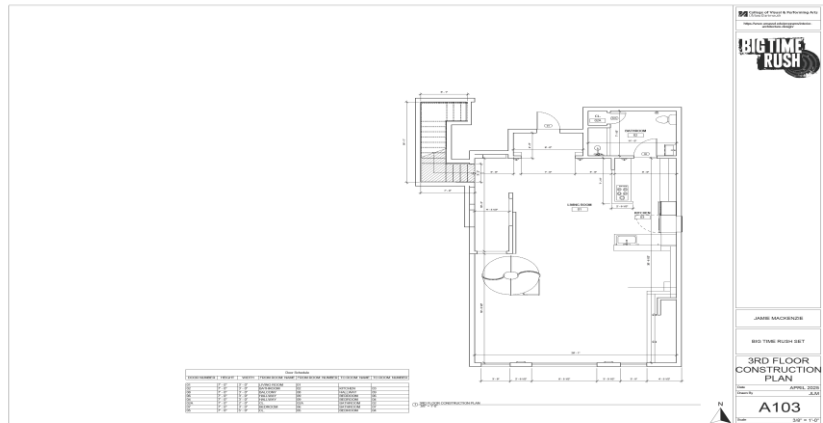
Presenting...

---

**Student & Emerging  
Professional  
Residential**

# Jamie Mackenzie – Big Time Rush Apartment

Student & emerging professional residential  
*University of Massachusetts Dartmouth*



**Presenting...**

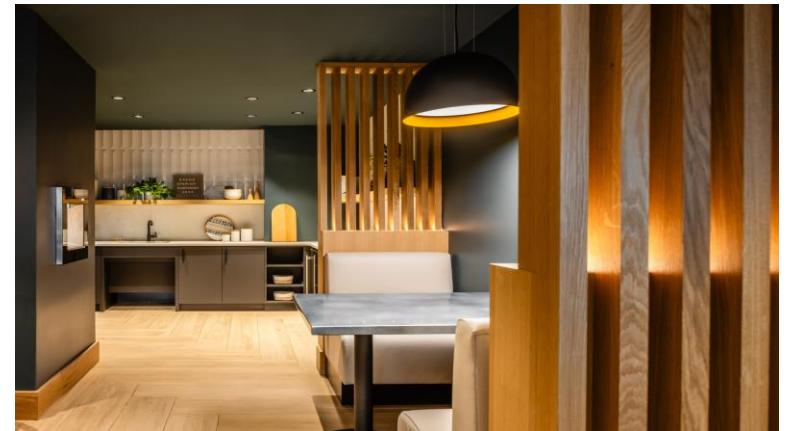
---

# **Sustainable or Biophilic Design**



# Shannon Wood - Neponset Landing Repositioning

Sustainable or biophilic design



**Presenting...**

---

# **Technology Integration in Design**



# Daniel Abramson - Cottage by the Sea

Technology Integration in Design





# Daniel Abramson - Cottage by the Sea (cont.)

## Technology Integration in Design



# Nomination Awards

---

## Design Educator of the Year

*Honors a design educator who has made a significant impact on students and the profession*

# Design Educator of the Year

---

*“She champions inclusion and professional excellence, building bridges between students, educators, and practitioners. Her efforts cultivate an environment where creativity, critical thinking, and professionalism flourish. In every setting, classroom, boardroom, or design studio, Denise demonstrates a passion for education, a commitment to rigor, and a belief in the power of design to transform lives. She is shaping not only the next generation of designers but also the profession itself.”*



# Congratulations!

---



**Denise Rush**  
*FASID, IIDA, IDEC*

# Nomination Awards

---

## ASID NE Legacy Award

*This award celebrates a lifetime of achievement and contribution to the interior design profession*

# ASID NE Legacy Award

---

*“Since their membership in 1989, they have exemplified the core values of being an Industry Partner: professionalism, advocacy, thought leadership, and community. They have both contributed to the advancement of the design profession by supporting research, education and collaborative efforts with fellow ASID members. They embody a tireless commitment of service to ASID and the interior design trade. They have fostered many lifelong relationships in the community making lasting contributions to the design industry, and people’s lives.”*



# Congratulations!

---



**Michelle and  
Wayne Southworth**

*MWI Fibershield*