

INVITATION/BASIC INFORMATION

Rhode Island's top interior designers will showcase their creative talents at the American Society of Interior Designers' Entry Tablescape Competition: *Making a Grand Entrance*. This festive event will be held on Wednesday, September 19th during the fifth annual Design Week RI at Hope Artiste Village.

Network with Rhode Island's creative professionals, peruse tantalizing tablescapes, share a drink and have a bite to eat. Select tablescapes will be auctioned off at 7:30pm . Please join us!

Making a Grand Entrance

Wednesday, September 19, 2018

5:00 pm - 8:00 pm

Events on Main

Hope Artiste Village

1005 Main St., #1201

Pawtucket, RI 02860

There are 12 spaces available for the entry table competition. Each 8' x 8' area is comprised of an exposed brick wall with a central 4' wide x 9' high window and the open space in front of it. The event takes place in a beautiful historic mill building.

TICKETS: General Admission is complimentary provided by the American Society of Interior Designers, New England Chapter and the *Rhode Island Design Community*

Please RSVP

DESIGNER SUBMISSIONS GUIDELINES

The American Society of Interior Designers' New England Chapter invites YOU to design an entry tablescape.

Cost: – Complimentary to ASID Members, Non-Members and Students

SUBMISSION DEADLINE: 9/7/18

SUBMISSIONS: Proposals can be emailed to: Sophia sophia@scsdesign.net or Laurie Seubert Laurie@bbdsri.com

- Proposals must be received [on or before September 7, 2018.](#)

ENTRY TABLESCAPE GUIDELINES:

- You may choose to design an entire "space" or simply the table.
- Tables/Vignettes: Designs for center tables, console tables, pier tables and any other piece you think would be fabulous in a foyer.
- Be creative!!! Dazzle us.
- Designers are responsible for creating the design and supplying all items within it including tables, accessories, objet d'art, floor coverings, and anything else that inspires you.
- Your tablescape vignette must fit within a 8 foot x 6 foot area
- Participants have the option to include their entry tables in a silent auction! You set the starting bid price, based on how much money you would like to make back.

FREQUENTLY ASKED QUESTIONS

Can I use a rug? Yes

Can I hang artwork, mirrors or other wall decor? Are there walls available? If you can safely prop or attach these items to your table, then yes, let your creativity soar. In addition, you may provide, install and dismantle a wall surface upon which you are able to safely hang artwork and other wall decor.

Candles? No real candles – obviously!

Can I get a sponsor to provide the table? Each designer is responsible for providing a table and the design. You may work in partnership with a Sponsor who offers to donate furnishings.

What happens to the tablescape at the end of the night?

You will have the option to include your table in our silent auction with the starting bid at the cost you'd like to recoup. You or your sponsor can also donate the entire table and its contents to be auctioned off.

Loading/Unloading Equipment & Furnishings: If you plan to transport your equipment in your own vehicle, please contact us for loading instructions.

When can I set up? Designers can begin setting up their tablescapes at 11am and must be finished by 4pm on September 19th.

Is there a Competition? Event guests will vote for their favorite entry

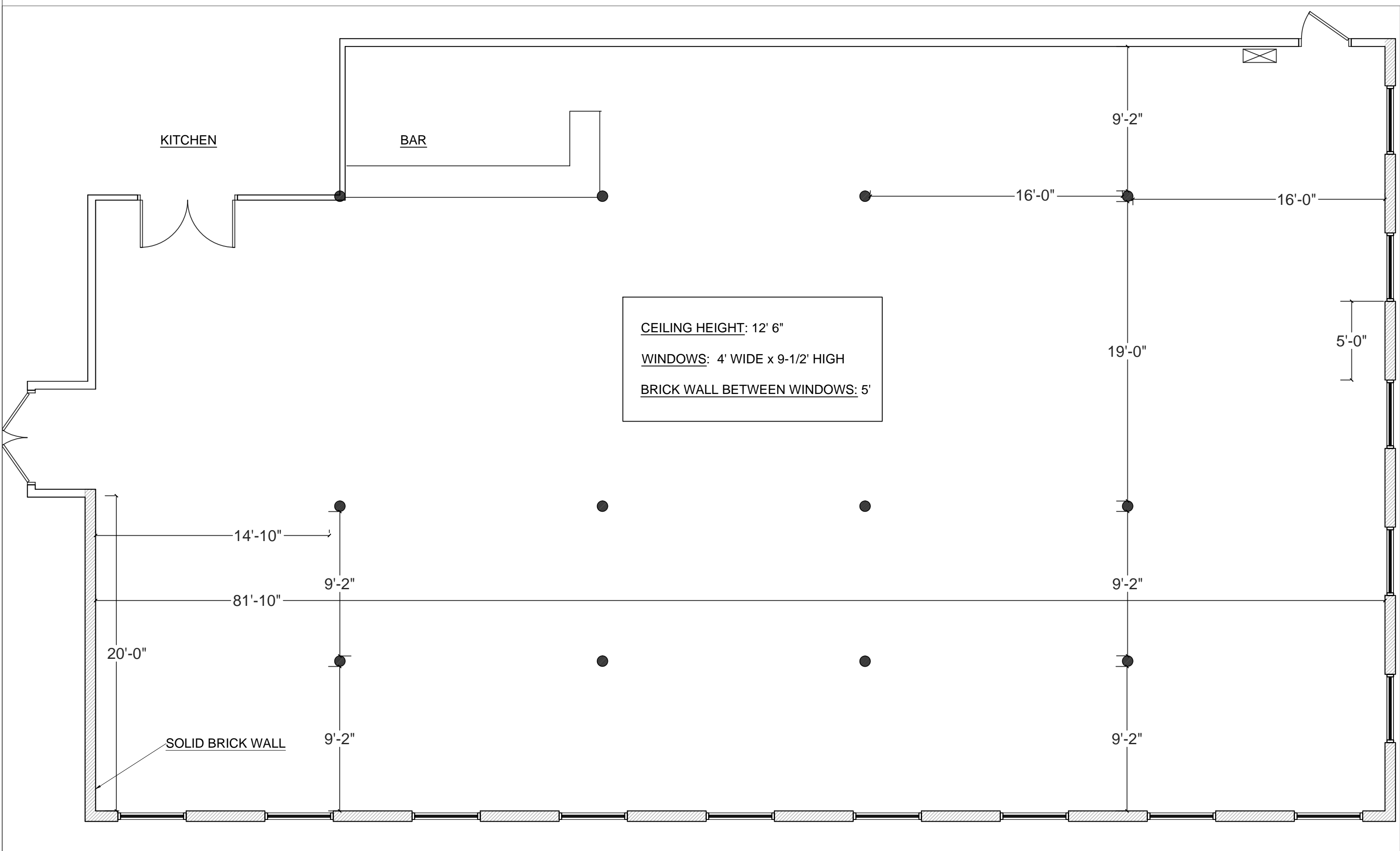
Images of the three most popular tablescapes will be posted on ASID New Englands website and social media channels. Designers should provide social media contact information in their application so they can be identified correctly.

If you have additional questions, please contact Laurie Seubert at Laurie@bbdsri.com or Sophia Shibles at sophia@scsdesign.net

DESIGNER SUBMISSION FORM

Please submit and attach the following form to your Proposal





HOPE ARTISTE VILLAGE RENTAL SPACE: PLAN VIEW
SCALE 3/16 " =1'

Name:_____

Business Name:_____

Business Mailing Address:_____

Business Website:_____

Business Instagram username, if applicable: _____

Business Facebook username, if applicable: _____

Email:_____

Phone:_____

Preferred Method of Contact:_____

Proposals must be digitally submitted via email to:

Sophia: Sophia@scsdesign.net

Laurie: Laurie@bbdsri.com